

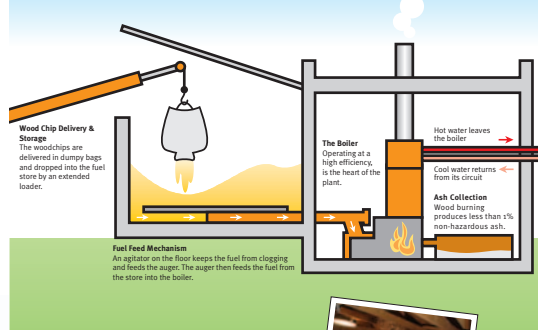
An established sawmill business, EG Johnstone & Co began supplying woodchips due to local demand, initially chipping directly into delivery bags as required. In order to be able to maintain a stock of chips to supply an expanding market, funding from the EU ERDF and HIE Argyll and the Islands helped the company to build a storage and drying shed, and adapt a lorry for woodchip delivery.



EG Johnstone & Co

Sustainable woodfuel supply and heating

How does a woodfuel boiler work?
Modern installations are fully automated and require minimal attention. The key components are the boiler, fuel handling system, and the flow and return systems.



The fuel supply
The woodchip produced by EG Johnstone & Co is made from the co-product of the sawmilling operations plus forest-dried timber bought in as necessary. The Company is Forest Stewardship Council certified, and all timber is sourced from sustainably managed forests.

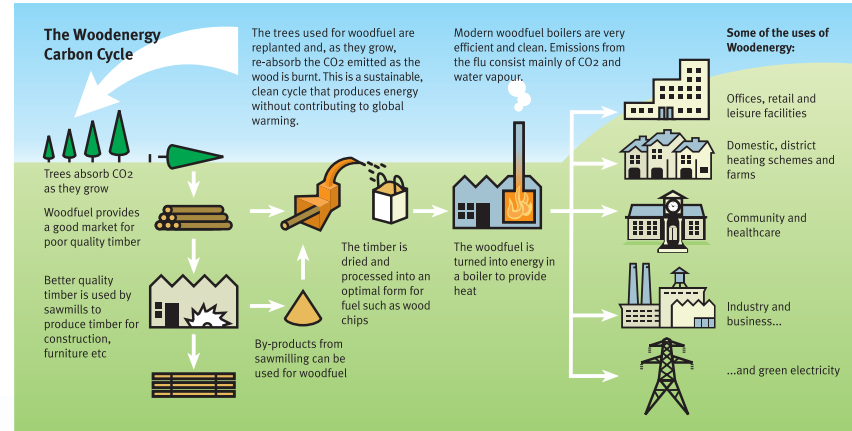


Facts and figures

- Wood chipper:** Bandit mobile self-powered chipper
- Processing:** drying shed with Lister air blower to dry the woodchip
- Delivery:** Lorry with Benfiglioli P3500 PTO-driven crane to deliver bulk bags of woodchip



Sustainable Heating with WOODENERGY SCOTLAND



What is woodfuel?
Woodfuel is a modern, clean and environmentally friendly alternative to fossil fuels, and is an economic solution for the heating needs of public buildings, industry and business premises, agricultural buildings and households. It comes in many forms including logs, pellets (made from sawdust), and woodchips.
Woodfuel is widely used throughout mainland Europe for heating and power generation and is Europe's most important source of renewable energy providing 51% of all renewable energy.

- Why biomass?**
- Supporting the local economy**
- local income stream
 - more local jobs than any other renewable energy alternative
 - new market for forestry and farming industries
 - cheaper fuel prices
- Environmental Facts**
- renewable energy
 - clean and safe to store
 - promotes sustainable forest management and so can benefit wildlife
- Social Benefits**
- local employment
 - communities can contribute to their own future energy needs
 - helps reduce fuel poverty